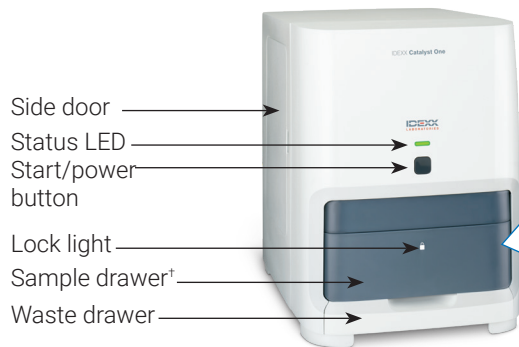


# Catalyst One Chemistry Analyzer

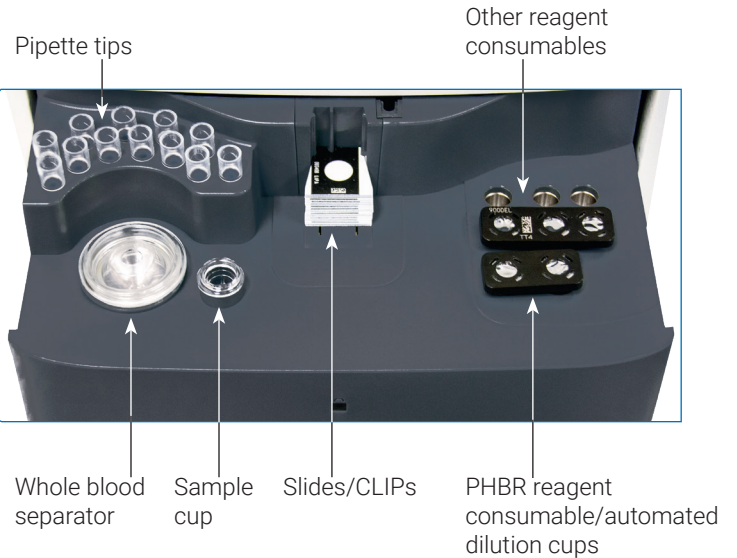
## Quick Reference Guide

**Note:** For detailed instructions on using your Catalyst One\* Chemistry Analyzer, see the *IDEXX Catalyst One\* Chemistry Analyzer Operator's Guide*.

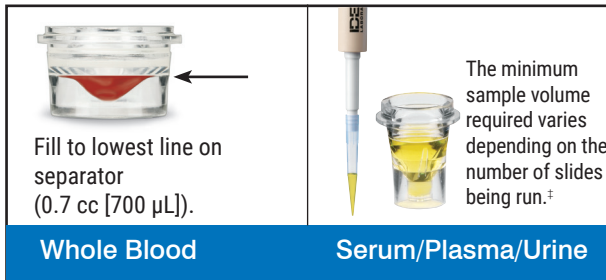
### Catalyst One Analyzer Components



†The sample drawer photo (shown at right) is for reference purposes only. Not all consumables should be loaded for a single run (for example, never load both a whole blood separator and a sample cup).



### Sample Volume Required



‡300 µL is the recommended sample volume when running a Chem 17 CLIP and electrolytes.

### Running a Sample

1. Enter the sample information on the IDEXX VetLab\* Station.
2. Load the slides and sample in the sample drawer.
3. Close the sample drawer and press the Start button on the analyzer.

### Dilutions

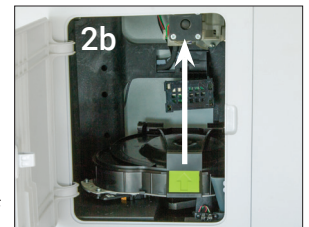
The Catalyst One analyzer supports automated dilutions (the analyzer mixes the sample and diluent for you) and manual dilutions (you prepare the dilution outside of the analyzer). **Do not dilute samples that are undergoing ammonia, phenobarbital, fructosamine, total T<sub>4</sub>, SDMA, pancreatic lipase, progesterone, bile acids, or electrolyte testing.**

### Running Quality Control

1. Tap the **Catalyst One** icon on the IDEXX VetLab Station Home screen.
2. Tap **Maintenance** and then tap **Quality Control**.
3. Tap the quality control lot number you are using and then tap **Run QC**.
4. Follow the on-screen instructions for preparing and running quality control.

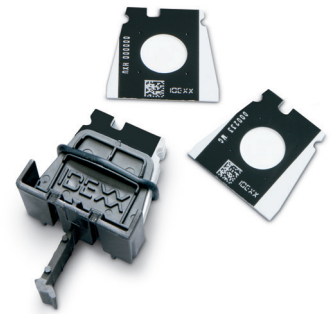
### Cleaning the Internal Components (Monthly)

1. Tap the **Catalyst One** icon on the IDEXX VetLab Station Home screen.
2. Tap **Maintenance**, tap **Clean**, and follow these on-screen instructions.
  - a. Open the side door on your analyzer.
  - b. Raise the carousel cover until the green lever magnetizes itself to the inside of the analyzer.
  - c. Remove the carousel.
  - d. Using an IDEXX-supported alcohol prep pad, wipe the incubator ring and optics window.
  - e. Clean the reference tile on the carousel.
  - f. Using an IDEXX-supported dry optical tissue, dry the optics window and reference tile.
  - g. Replace the carousel, lower the carousel cover until it firmly clicks in place, and close the side door.
  - h. Tap **Done**.



## Catalyst CLIPs and Slides

Chemistry	Abbreviation	Chem 17 CLIP	Chem 15 CLIP	Chem 10 CLIP	Equine 15 CLIP	NSAID 6 CLIP	UPC Panel†	Lyte 4 CLIP	SDMA and TT4 Kit	QC CLIP	Individual Slides
Albumin	ALB	✓	✓	✓	✓					✓	✓
Alkaline phosphatase	ALKP	✓	✓	✓	✓	✓				✓	✓
Alanine aminotransferase	ALT	✓	✓	✓		✓				✓	✓
Amylase	AMYL	✓									✓
Aspartate aminotransferase	AST				✓	✓					✓
Bile acids	BA										✓
Blood urea nitrogen	BUN	✓	✓	✓	✓	✓					✓
Calcium	Ca	✓	✓		✓					✓	✓
Cholesterol	CHOL	✓	✓								✓
Creatine kinase	CK				✓						✓
Creatinine	CREA	✓	✓	✓	✓	✓					✓
Chloride	Cl							✓			
C-reactive protein†	CRP										✓
Fructosamine†	FRU										✓
Gamma-glutamyltransferase	GGT	✓	✓		✓						✓
Glucose	GLU	✓	✓	✓	✓					✓	✓
Potassium	K							✓			
Lactate	LAC										✓
Lactate dehydrogenase	LDH				✓						✓
Lipase	LIPA	✓									✓
Magnesium	Mg										✓
Sodium	Na							✓			
Ammonia	NH <sub>3</sub>									✓	✓
Phenobarbital†	PHBR										✓
Inorganic phosphate	PHOS	✓	✓								✓
Pancreatic lipase†	PL										✓
Progesterone	PROG										✓
Symmetric dimethylarginine†	SDMA								✓		✓
Total bilirubin	TBIL	✓	✓		✓						✓
Total protein	TP	✓	✓	✓	✓						✓
Total T <sub>4</sub> †	TT4								✓		✓
Triglycerides	TRIG										✓
Urine creatinine	UCRE						✓				
Urine protein	UPRO						✓				
Uric acid	URIC										✓



†Validated reference intervals for equine and “other” species are unavailable.

‡Validated reference intervals for feline, equine, and “other” species are unavailable.