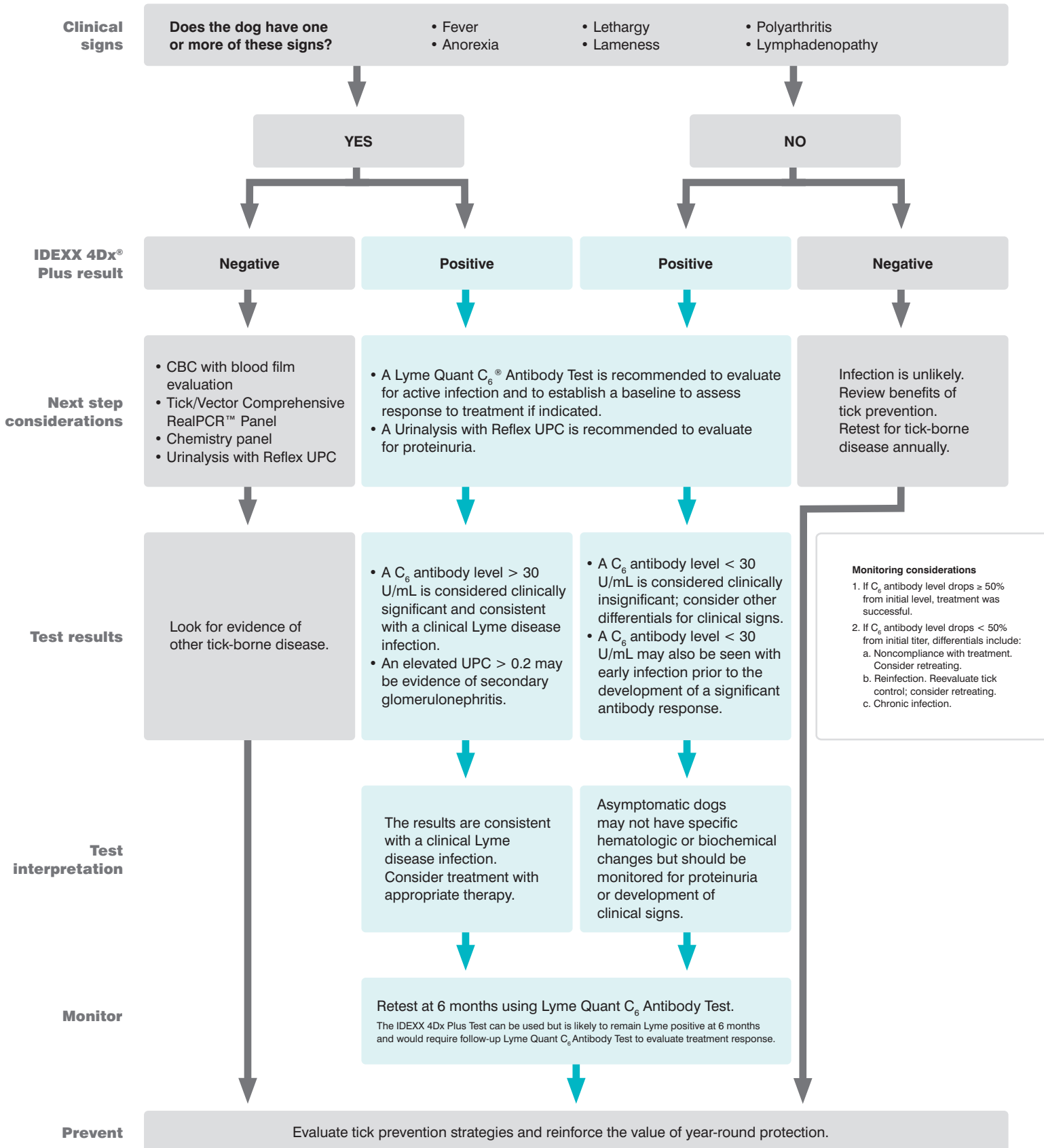


Lyme disease

Next steps to interpret results



Note: This algorithm is provided as a reference resource only for use by, or under the supervision of, a licensed veterinarian.

© 2021 IDEXX Laboratories, Inc. All rights reserved. • 09-2690087-00

All ®/TM marks are owned by IDEXX Laboratories, Inc. or its affiliates in the United States and/or other countries. The IDEXX Privacy Policy is available at idexx.com.

